

# CNC COMPACT MULTI-POWER SUPER VISE

Model: ACM-100S, 130S, 160S



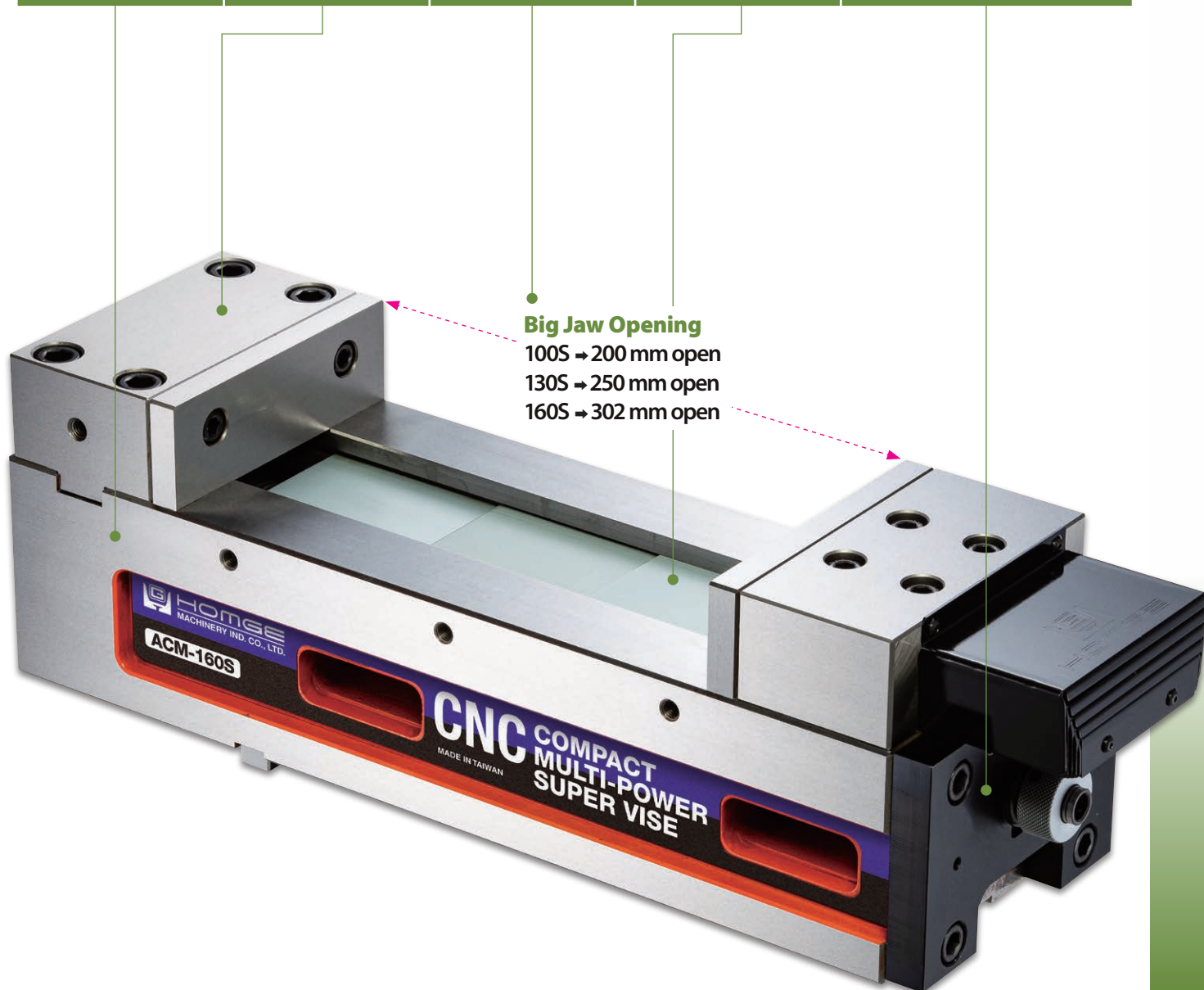
- Shortest Vise Body
- Big Jaw Opening
- Compact Multi-Power System clamping force  
**0-5000 kg**

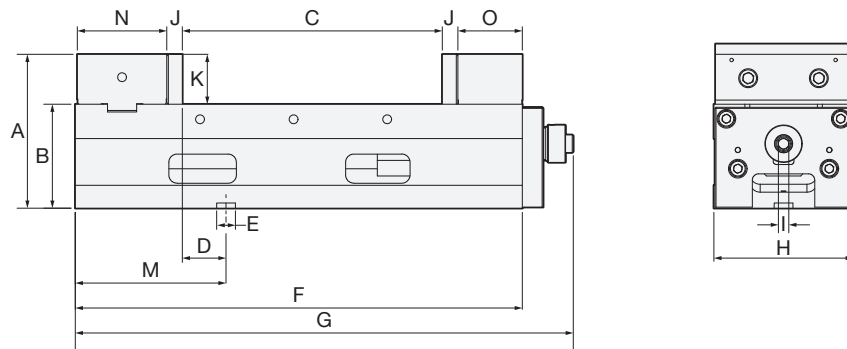


## STANDARD ACCESSORIES:

- 2 pcs of Alignment Wedge
- 4 pcs of Clamp
- 1 pc of Wrench

<p>Vise body is made of <b>Ductile Iron</b> above <b>FCD 60</b> grade and its slideways are <b>hardened</b> to <b>HRC 50</b>, which make the vise tensile strength with high precision accuracy.</p>	<p>Vise jaws are made of <b>High Quality Tool Steel (SCM440)</b> and Hardened to achieve <b>HRC 50</b>, which makes vise clamp the workpieces easily and firmly.</p>	<p><b>Compact design</b> with <b>big jaw opening</b>, which enhances machine space utilization. Suitable for all kinds of horizontal and vertical CNC Machining Centers, also Tapping Centers.</p>	<p>Special Leadscrew Covers protect <b>Leadscrew</b> from swarf and avoid any possible damage to internal parts.</p>	<p>Constructed from High Grade <b>BEARING STEEL</b>, the patented <b>MULTIPOWER SYSTEM</b> doubles the clamping force of the vise, offering a clamping force range of <b>0 to 5000kg</b>. Additionally, this system guarantees a consistent application of pressure, effectively eliminating concerns related to oil leakage commonly associated with hydraulic vises.</p>
<b>1</b>	<b>2</b>	<b>3</b>	<b>4</b>	<b>5</b>



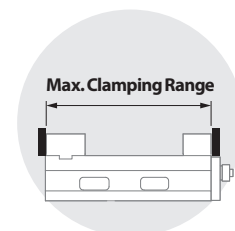
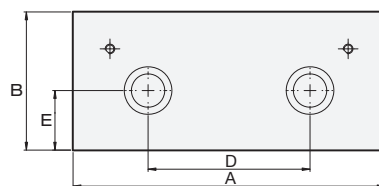

**SPECIFICATIONS** (Material: Vise body: Ductile Iron FCD60. Rail hardness: HRC 50 / Fixed Jaw & Moveable Jaw: S50C. Hardness: HRC 50)

Unit: mm

Model	A	B	C	D	E	F	G	H	I	J	K	M	N	O	Max. Clamping Force	Weight (kg)
ACM-100S	140	100±0.01	<b>200</b>	68	18	352	411	100	10	15	40	145	60	62	<b>4000kg</b>	31
ACM-130S	148	100±0.01	<b>250</b>	42	18	430	479	134	10	15	48	145	86	62	<b>4000kg</b>	46
ACM-160S	168	115±0.01	<b>302</b>	42	18	500	549	161	10	15	53	145	86	80	<b>5000kg</b>	63

# Optional Accessories

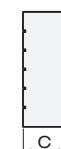
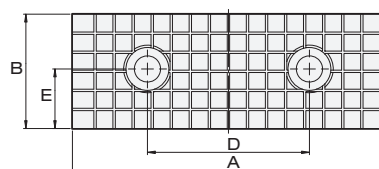
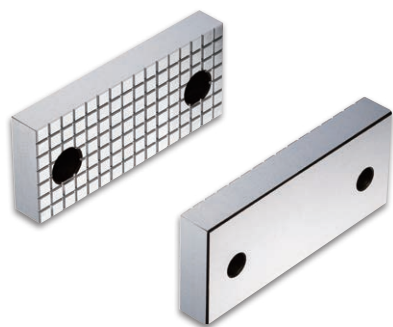
## Clamping Jaws


**SPECIFICATIONS**

Unit: mm

for Model	A	B	C	D	E	Max. Clamping Range	Weight (kg)
ACM-100S	101	50	20	58	22	350	1.6
ACM-130S	131	58	22	68	25	410	2.2
ACM-160S	158	63	21	98	32	498	2.4

## Outer Jaws


**SPECIFICATIONS**

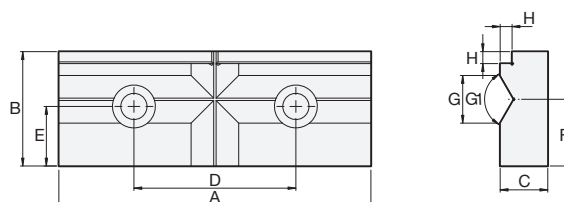
Unit: mm

for Model	A	B	C	D	E	Weight (kg)
ACM-100S	101	40	15	58	18	0.9
ACM-130S	131	48	18	68	25	1.6
ACM-160S	158	53	18	98	32	2.3

## Cross Grooved Jaws

# Optional Accessories

## Clamping Jaws

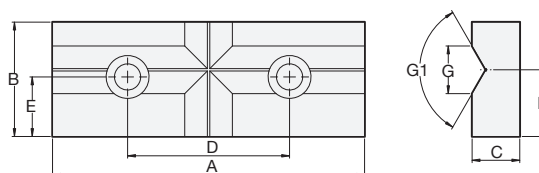


### SPECIFICATIONS

Unit: mm

for Model	A	B	C	D	E	F	G	G1	H	Weight (kg)
ACM-100S	101	40	18	58	18	22	18	120°	5	1.2
ACM-130S	131	48	20	68	25	28	20	120°	5	2
ACM-160S	158	53	20	98	32	24	20	120°	5	2.6

## Combined Jaws

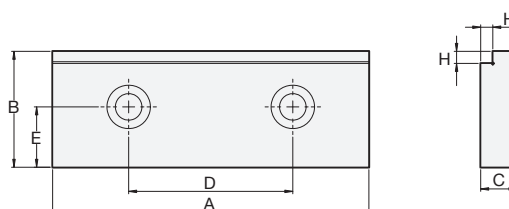


### SPECIFICATIONS

Unit: mm

for Model	A	B	C	D	E	F	G	G1	Weight (kg)
ACM-100S	101	40	18	58	18	22	18	120°	1.2
ACM-130S	131	48	20	68	25	28	20	120°	2
ACM-160S	158	53	20	98	32	24	20	120°	2.6

## V Jaws



### SPECIFICATIONS

Unit: mm

for Model	A	B	C	D	E	H	Weight (kg)
ACM-100S	101	40	15	58	18	5	1
ACM-130S	131	48	15	68	25	5	1.6
ACM-160S	158	53	21	98	32	5	2.8

## Step Jaws